



b.a.b-technologie gmbh

Home Information Terminal

User Guide

ja
04.09.2008
Stand 03.02.2010 11:08

EN

ver. 1.2

b.a.b – technologie gmbh

INHOUSE Dortmund
Rosemeyerstr. 14
44139 Dortmund

info@bab-tec.de

Tel. +49 (0) 231 - 476 425 - 30
Fax. +49 (0) 231 - 476 425 - 59

Index of contents

1.	What is the HomeInformationTerminal?	5
2.	What do I need to use the HomeInformationTerminal?	6
2.1	The b.a.b-technologie manager	6
3.	The HomeInformationTerminal project	7
3.1	General configuration of the HomeInformationTerminal (General)	7
3.2	Configuration of the navigation line (Naviagtion)	8
3.2.1	The items in detail	9
4.	Create a HomeInformationTerminal Project	11
4.1	Configuration of the HomeInformationTerminal projects	11
4.2	Insert, move and delete items	15
4.3	Set up a type, name, tooltip and icons of items	14
4.4	A sample project	14
5.	Using the HomeInformationTerminal	15
5.1	License file. How you get one?	16
5.2	Setting the license	17
6.	How do I create a new HomeInformationTerminal Configuration?	20
7.	How do I configure the navigation bar?	21
8.	How do I use the HomeInformationTerminal?	16

Table of figures

Figure 1 HIT start page	5
Figure 2 Allgemeine Konfiguration HIT Projekt	7
Figure 3 configuration of the navigation line	8
Figure 4 Item web link parameter	9
Figure 5 eibPort Item Parameter	9
Figure 6 Mail Item parameter	10
Figure 7 General HIT project configuration	12
Figure 9 RSS Feeds properties	13
Figure 8 configuration of the navigation buttons	13
Figure 10 HIT project item navigation	15
Figure 11 Sample HIT project	14
Figure 12 HomeInformationTerminal start page with on screen keyboard	19
Figure 13 HomeInformationTerminal Menu	19
Figure 14 HIT License Dialog	16
Figure 15 License user details	16
Figure 12 HIT Project Editor	20
Figure 13 Configure the navigation bar	21
Figure 14 Missing license file	16

HomeInformationTerminal

1. What is the HomeInformationTerminal?

The HomeInformationTerminal (in the following **HIT**) is a frame work which provides a very easy user interface e.g. for touch displays, ultra mobile PC and others. The HIT is a graphical user interface. It contains several kinds of different items.

It gives to the user the opportunity to design his own HIT interface. Use several services like browsing websites, using home automation services like eibPort, controlling multimedia systems or read your emails.

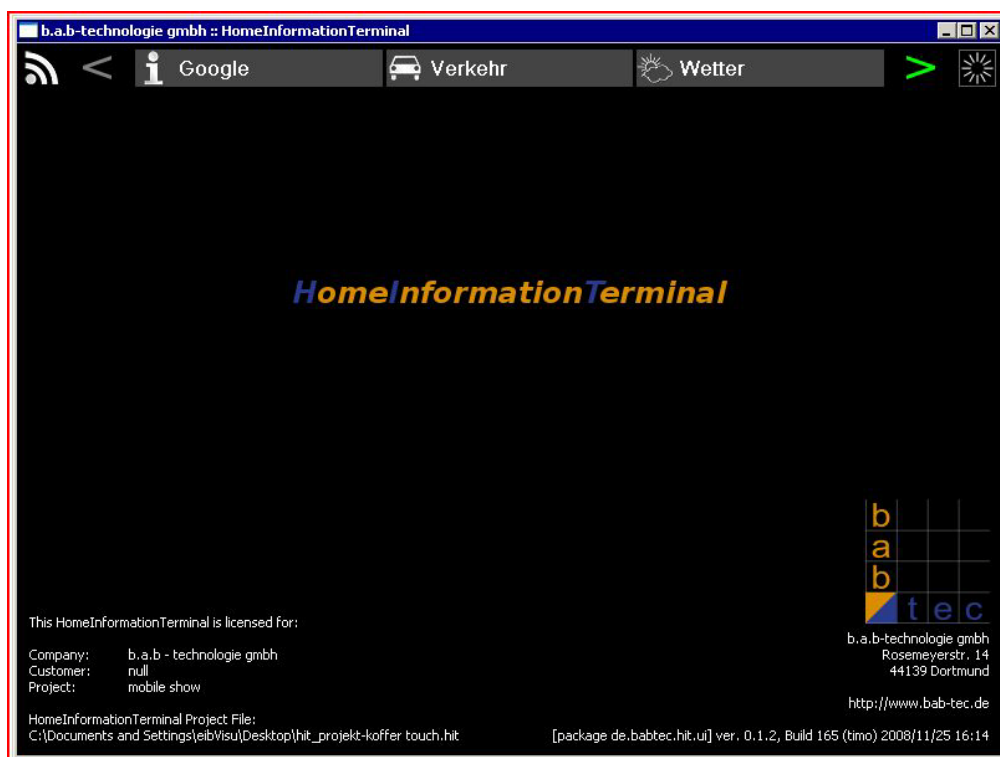


Figure 1 HIT start page

The HomeInformationTerminal need at last the Java Runtime Environment (JRE) version 1.6.

2. What do I need to use the HomeInformationTerminal?

To install and set up the HIT you need the following components:

1. b.a.b-technologie manager software (need to design the HIT-project)
2. The HIT software (e.g. to install on a touch panel pc)
3. Valid licenses file (it's possible to try the HIT in the demo modus for 30 minutes)
4. Java JRE at last version 1.6 (for the HIT client and the b.a.b-technologie manager)

2.1 The b.a.b-technologie manager

Thereby the user can design the user interface of the HIT by himself. He needs this external software to create the HIT project.

The HIT project will be created and modified with the **b.a.b-technologie Manager**. The Manager is a universal bab-tec tool which is expendable with plug-ins.

For the HIT project creation and modifying the HIT Editor plug-in is required. This plug-in is included by default.

The bab-tec Manager can be downloaded direct from the bab-tec homepage or contact info@bab-tec.de for the download link.

The bab-tec Manager will be downloaded as ZIP file. Unzip the file and start the bab-tec Manager with the *manager.exe* file

Instal the Manager Software on a normal PC/Laptop. The Manger is the Editor for the HIT Project.

Please note that the HIT-setup is normaly not made on this PC/Laptop. This setup is done on the target-computer normaly a Touch Panel.

3. The HomeInformationTerminal project

The HIT project consists of a navigation line in which menu points (named “item”) are inserted. The HIT editor has two edit views. The “general” and the “navigation” view (configuration). You can switch between the views with the tabs on the bottom of the HIT editor (see figure 2; red marked).

3.1 General configuration of the HomeInformationTerminal (General)

The “general” view means configuration of the look and feel for HIT. There are three areas:

Appearance

Here are the settings for the appearance and the behavior. For example: the title of the HIT, position of the navigation line, font (style, size and color) and the colors.

But also the start behavior can be configured. For example “Start in kiosk modus or not” or “Allow Exit” forbid to leave the kiosk modus or not.

RSS Feeds

Manage the RSS feeds (add, delete, and set the order of the feeds), set an individually icon, choose font (style, size and color) and the divider character.

Browser Icons

Allocate individually icon for every buttons. (For the buttons: forward, backward, load, home)

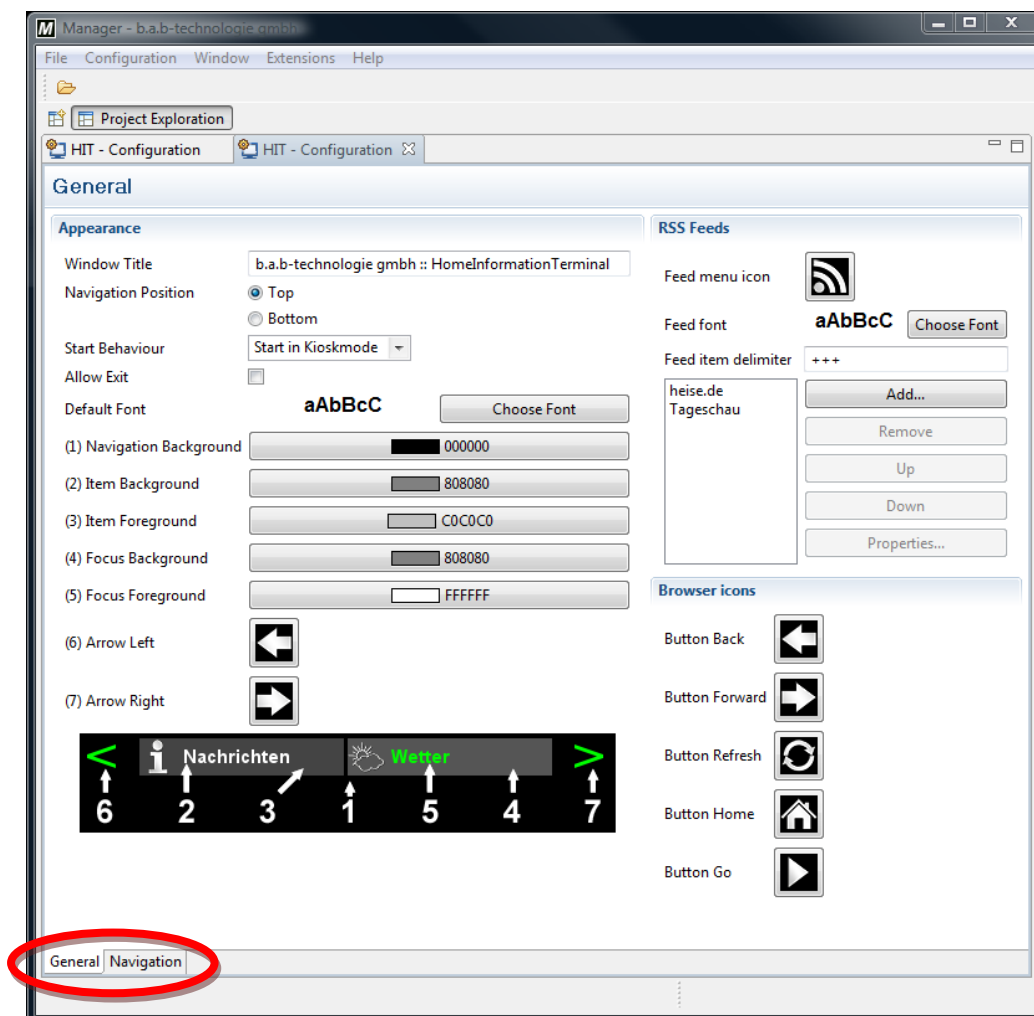


Figure 2 general configuration of a HIT Project

3.2 Configuration of the navigation line (Navigation)

The configuration of the navigation line:

(Change between the navigation and the general view with the tab in the left lower corner, see the red encircle in figure 2.)

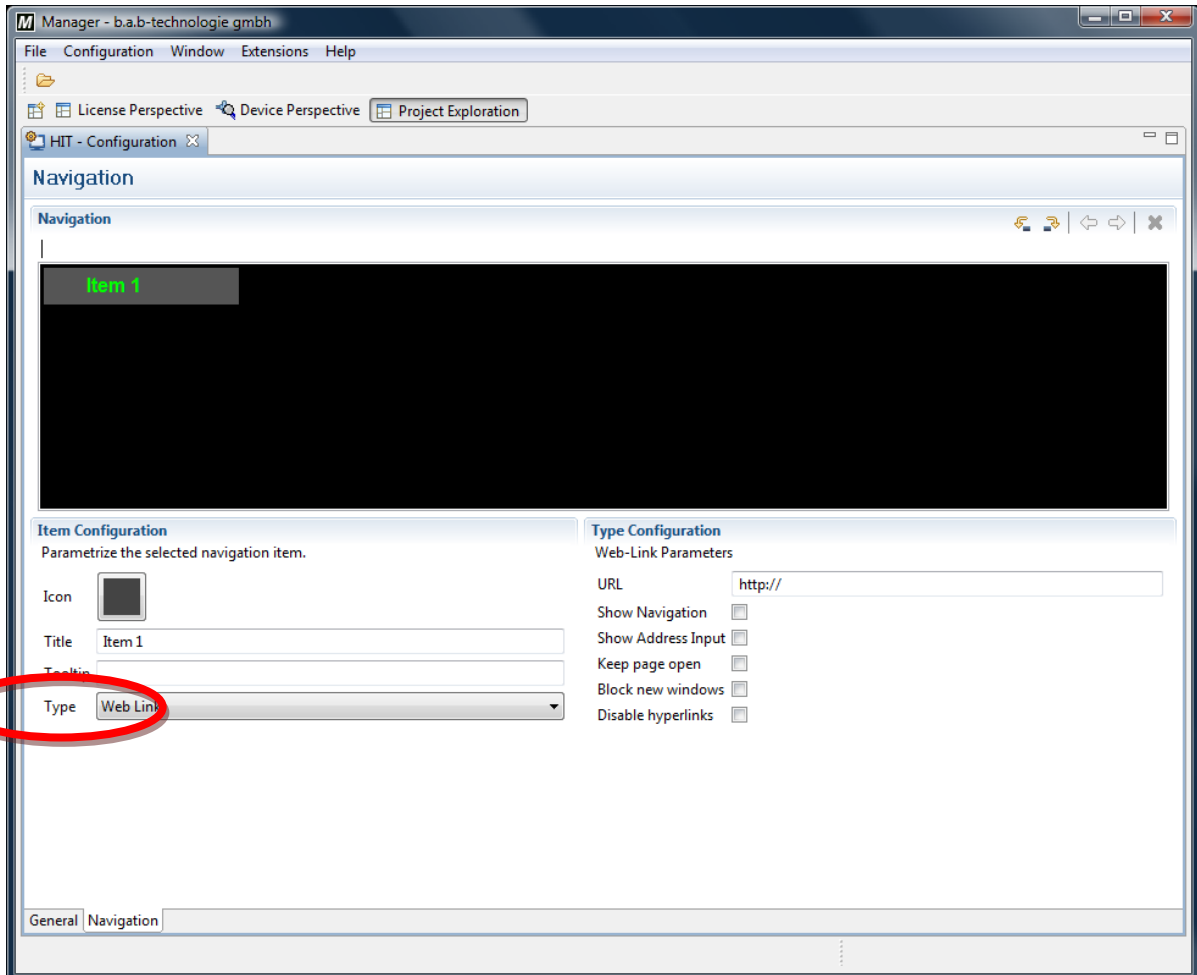


Figure 3 configuration of the navigation line

On the left lower side the user can set the type of the highlighted navigation point (named “item”). The user can set for every item an own icon (also user defined icon). Additionally to the icons the user can give a title and a tooltip for these items.

These type of items are possible (see figure 3):

- Menu
- Web Link
- UPnP
- eibPort
- Mail

On the right side there is the configuration area of the chosen type (Type Configuration).

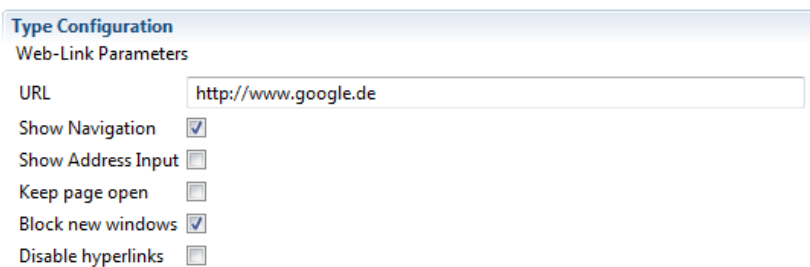
3.2.1 The items in detail

The items can be inserted on the left or right side of an existing item. It's also possible to integrate several items under a **Menu item**. The **Menu item** can hold further items.

The **UPnP type** works as a *control point* for UPnP compatible devices. There is nothing to configure for

The **Web-Link type** shows web sites. You have only to fill in the URL of the web site. The following additional parameters can be configured:

- Show Navigation Show the navigation elements.
- Show Address Input Show the address line.
- Keep Page open Keep the web page open (pages open faster, be careful: this needs more memory).
- Block new windows Forbid new windows (pop up windows).
- Disable hyperlinks Disable hyperlinks.



Type Configuration
Web-Link Parameters

URL

Show Navigation

Show Address Input

Keep page open

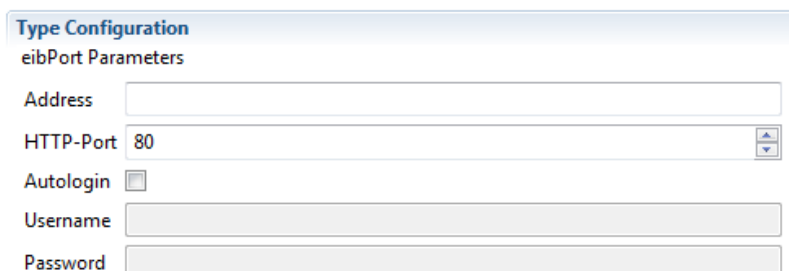
Block new windows

Disable hyperlinks

Figure 4 Item web link parameter

The **eibPort type** shows the EIB visualization of the eibPort. These parameters have to be configured:

- Address IP address of the eibPort.
- Http-Port Which is the http port of the eibPort?
- AutoLogin Activate/deactivate the automatic log in.
- Username Name of the user.
- Password Password of the user.



Type Configuration
eibPort Parameters

Address

HTTP-Port

Autologin

Username

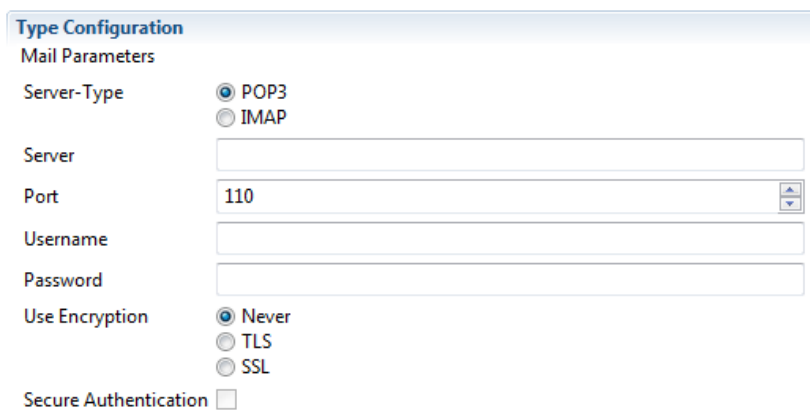
Password

Figure 5 eibPort Item Parameter

With the **email type** emails can be shown in the HIT. Following parameters has to be set:

- Server-Type Type of the email account
- Server Address of the mail server (incoming)
- Port Port of the (incoming) mail server
- Username username
- Password Password of the username
- Use Encryption Use encryption
- Secure Authentication secure authentication (registration)

All this setting can be taken from your “normal” email client (Microsoft Outlook, Thunderbird...) or from the help website of your email provider.



The screenshot shows a 'Type Configuration' dialog box with the following settings:

- Mail Parameters**
- Server-Type:** POP3 (selected), IMAP
- Server:** [Empty text field]
- Port:** 110 (dropdown menu)
- Username:** [Empty text field]
- Password:** [Empty text field]
- Use Encryption:** Never (selected), TLS, SSL
- Secure Authentication:** [Unchecked checkbox]

Figure 6 Mail Item parameter

4. Create a HomeInformationTerminal Project

The HIT project will be created with the b.a.b-technologie Manager. Create a new HIT project with "File" -> "New" -> "HomeInformationTerminal".

4.1 Configuration of the HomeInformationTerminal Projects

Under the tab "general" the basic settings will be configured. This includes the settings for the look and feel of the HIT.

- **Windows Title** Name of the HIT window
- **Navigation Position** Position of the navigation elements. Possible positions: top and bottom of the HIT window.
- **Start Behavior** Behavior of the HIT window.
 - *Start in Window* HIT will start in a "normal" window
 - *Start in Kioskmodus* HIT starts in full screen modus. The window title line and the windows taskbar will not show.
 - *Lock in Kioskmodus* User can't leave the kiosk modus. Only with a keyboard and the shortcut "Alt"+ "F4".
- **Allow Exit** Allow to exit the HIT. If this setting gets deactivated, the user can't leave the HIT.

Notice: If it's not allowed to close the HIT, the following settings must be set: active „Lock in Kioskmodus“ and deactivate „Allow Exit “ HIT can close only with a keyboard and the short cut "Alt"+ "F4".

- **Default font** With the button „Choose Font“ the default font can set
- **Colors**
 - Navigation Background (1) Background of the HIT window
 - Item Background (2) Background of the Items if they are not active
 - Item Foreground (3) Foreground (font) if the Item are not active
 - Focus Background (4) background if the Items are active
 - Focus Foreground (5) Foreground (font) if the Item are active
- **Arrow Left** (6) Choose the arrow for left scrolling
- **Arrow Right** (7) Choose the arrow for right scrolling

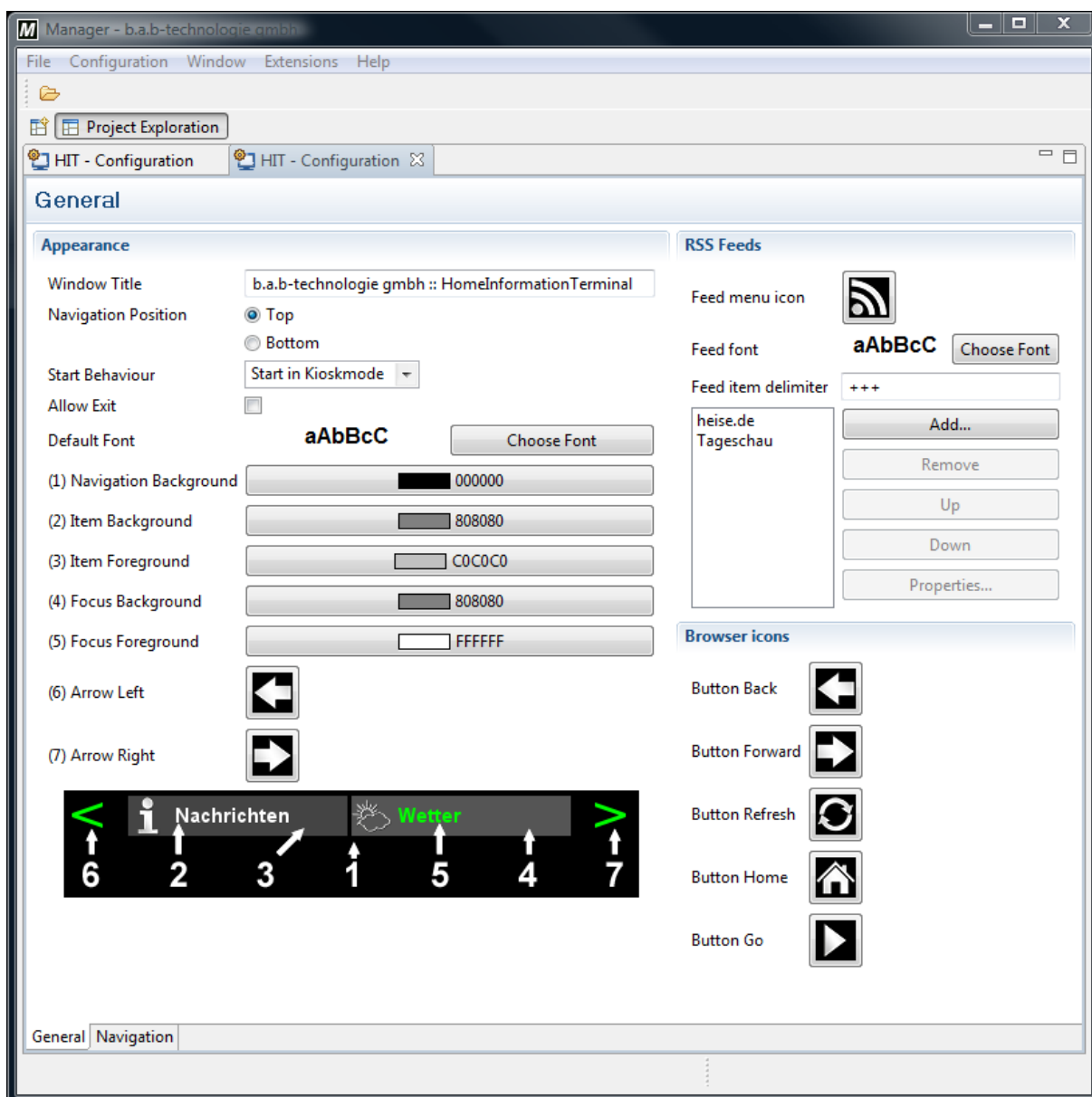


Figure 7 General HIT project configuration

Under the headline **RSS Feeds** all the parameters are listed:

- Feed menu icon Choose Icon for RSS feed
- Feed Font Font of the RSS feed
- Feed item delimiter Delimiter of the feeds

- Add Add RSS feed
- Remove Delete the chosen RSS feeds
- Up Move UP the chosen RSS feed
- Down Move DOWN the chosen RSS feed
- Properties... Properties RSS feed
 - Title Identifier of the RSS feed. Will show on the HIT.
 - Feed URL URL (Internet link) of the RSS Feed
 - Refresh (minutes) Refresh interval in minutes of the messages
 - Speed Run through speed of the messages.
 - Item count Number of the shown messages. „0“ show all messages.
 - Background Background color
 - Foreground Foreground color (Font)

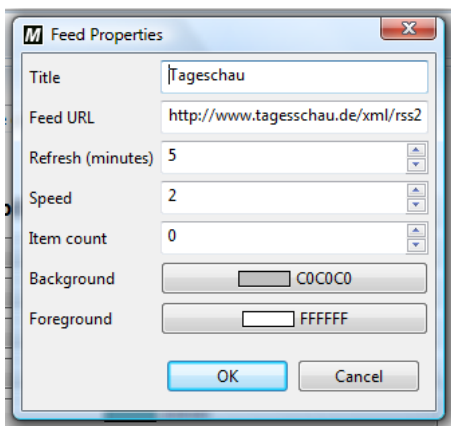


Figure 9 RSS Feeds properties

On the right side our browser icons are shown. They can be changed by clicking on it. These Buttons appear when you chose the item type Web Link:

- Button Back Back
- Button Forward Forward
- Button Refresh Refresh
- Button Home Start page
- Button Go Load

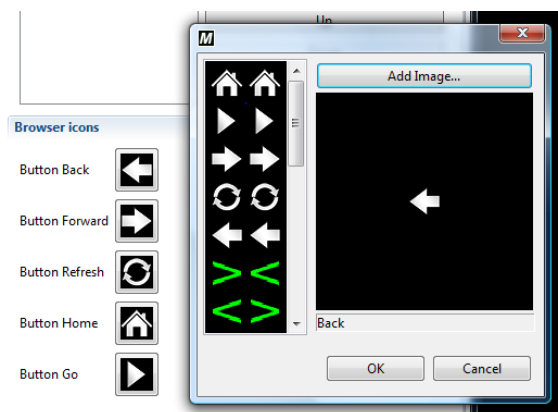


Figure 8 configuration of the navigation buttons

4.2 Set up type, name, tooltip and an icons for the items

4.3 A sample project

Here is a sample HIT project. This project contains Websites of a search engine, webcams, news, weather news, traffic news, music control and the eibPort visualization.

Let's go through the HIT project.

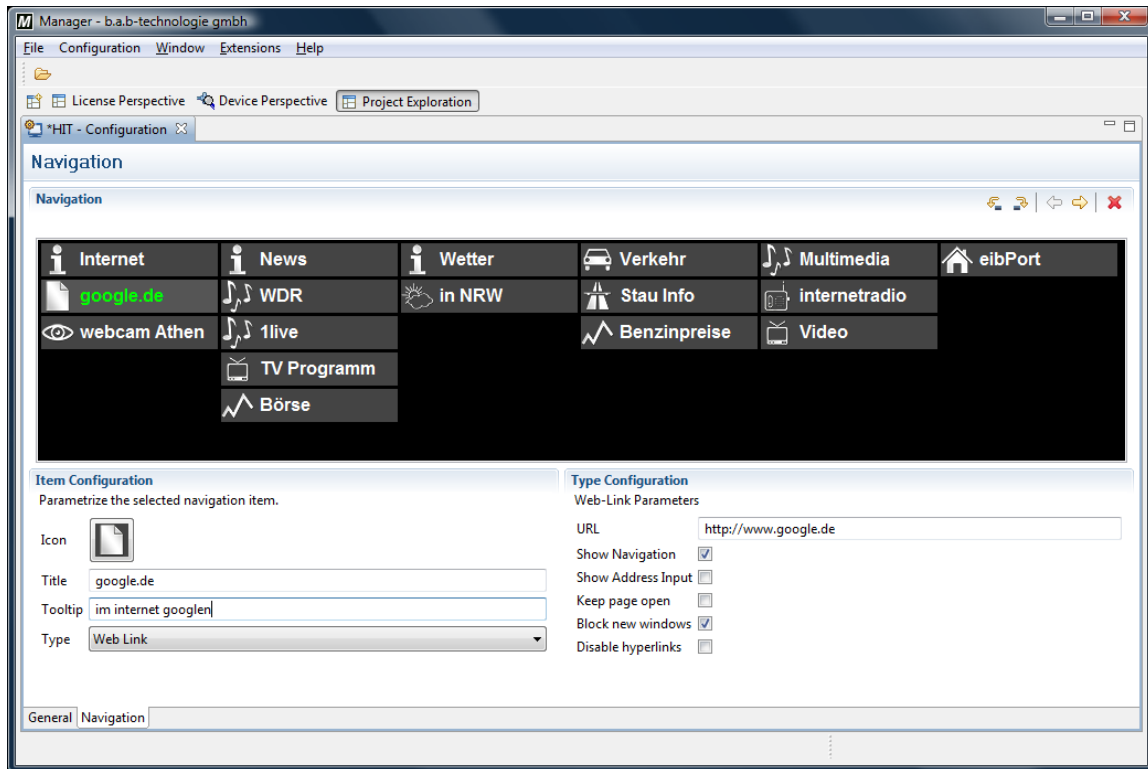
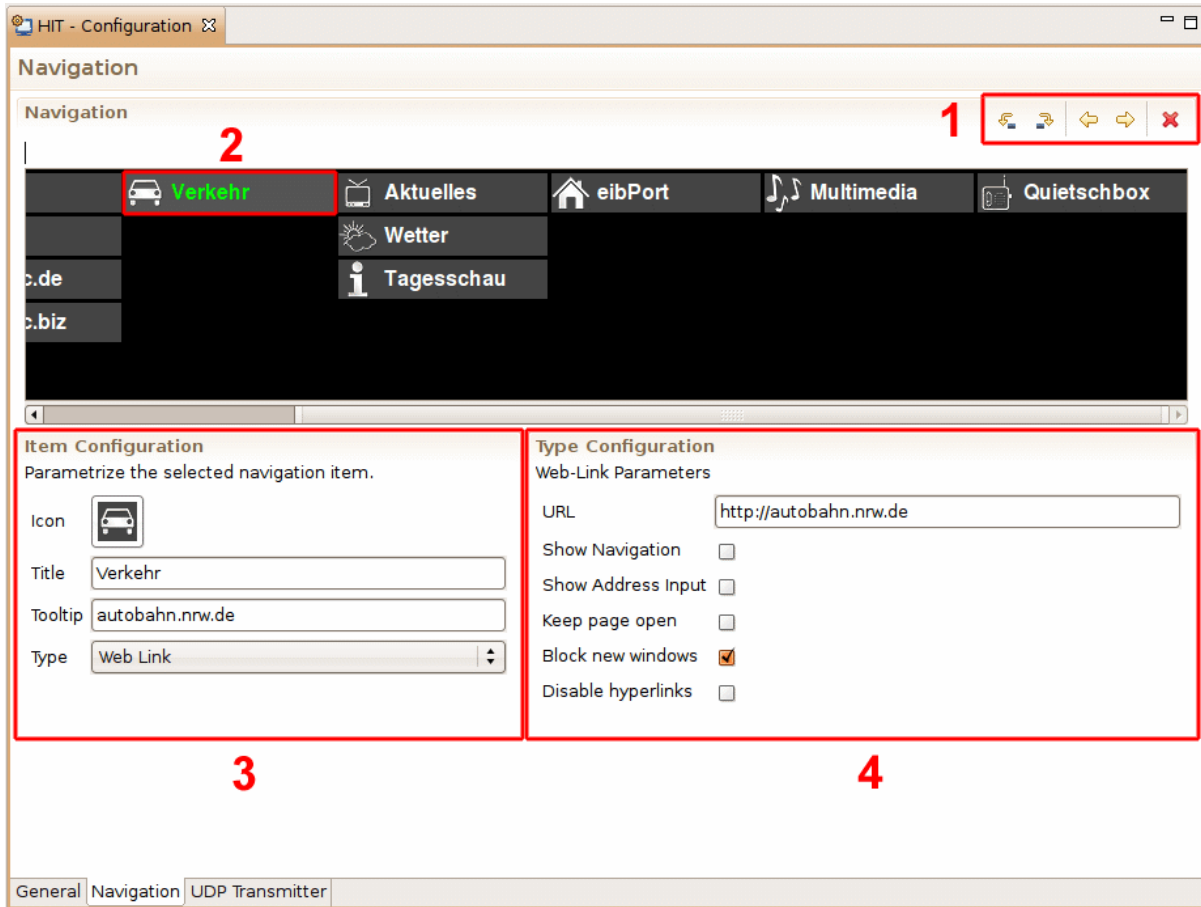

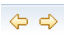


Figure 10 Sample HIT project

5. Insert, move and delete items



More items can be added with these two buttons  (area 1). The difference of these two buttons are: the left one places an new item before the highlighted item, and the second one a place the new item after the highlighted item.

The sequence of the items can be changed with the buttons  (area 1). To change the position of an item highlight the item and move it with the arrow buttons. The yellow arrow left button move the highlighted item one step to left and the yellow arrow right move the highlighted item one step to right. Items inside the "menu item" will change their position up and down.

The button  (area 1) delete the highlighted items.

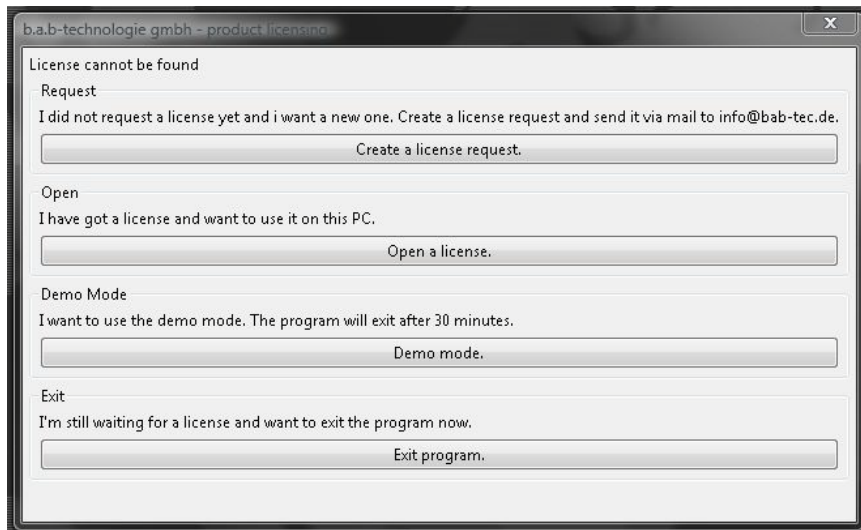
After you have ended filling in items you can store the HIT Configuration in the Manager under File → Save as → -name.hit. Save this file also on a e.g. USB stick: name.hit

6. First step of the HomeInformationTerminal?

Install the HIT-setup.exe on the target computer - normal a Touch Panel- where you will use HIT. You should start the HIT on the Panel you want to use it later, because it will be licensed only for this Panel PC. You cannot use the license on a different PC.

To start the HIT, double click on HIT-setup.exe you have on the CD of your eibPort or you have downloaded in the internet..

If you open the HIT for the first time, you will see the following dialog:



An error message will be shown (license file is not found) on the first start. You can create a license request or start the 30 minutes demo (without restrictions).

6.1 License file. How do you get one?

If the user hasn't a license file, he has to create a "license request file" and send it by Mail to b.a.b-technologie gmbh.

At the first start of HIT the user choose "Create a license request". The following window opens.

After the user has inserted his personal information for the HIT license he acknowledges his inputs with "OK".

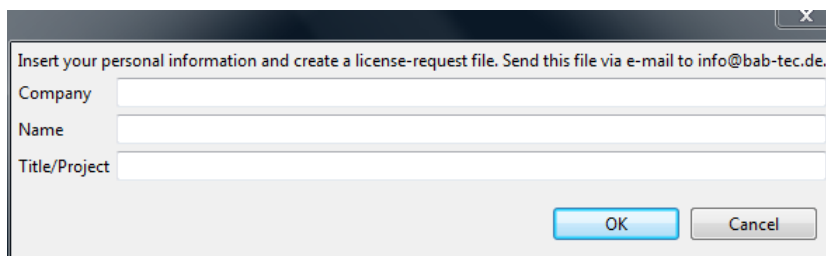


Figure 13 HIT License Dialog

Afterwards a file dialog opens to select the storage location for the "license request" file. Choose for example: c:\desktop

The next step is to send the license request file by mail to b.a.b-technologie info@bab-tec.de to get your HIT license.

6.1 Setting the license

After the user has received his HIT license he has to copy the license on the "HIT" computer (for example c:\desktop). On the next start of the HIT, the user can choose "open license file" and select the license file (c:\desktop\licence_name.dat). After these steps the HIT is licensed.

NOTICE:

THE LICENSE FILE WILL WORK ONLY ON THE PC THAT HAS CREATE THE LICENSE REQUEST FILE! EVERY PC NEEDS HIS OWN LICENSE FILE.

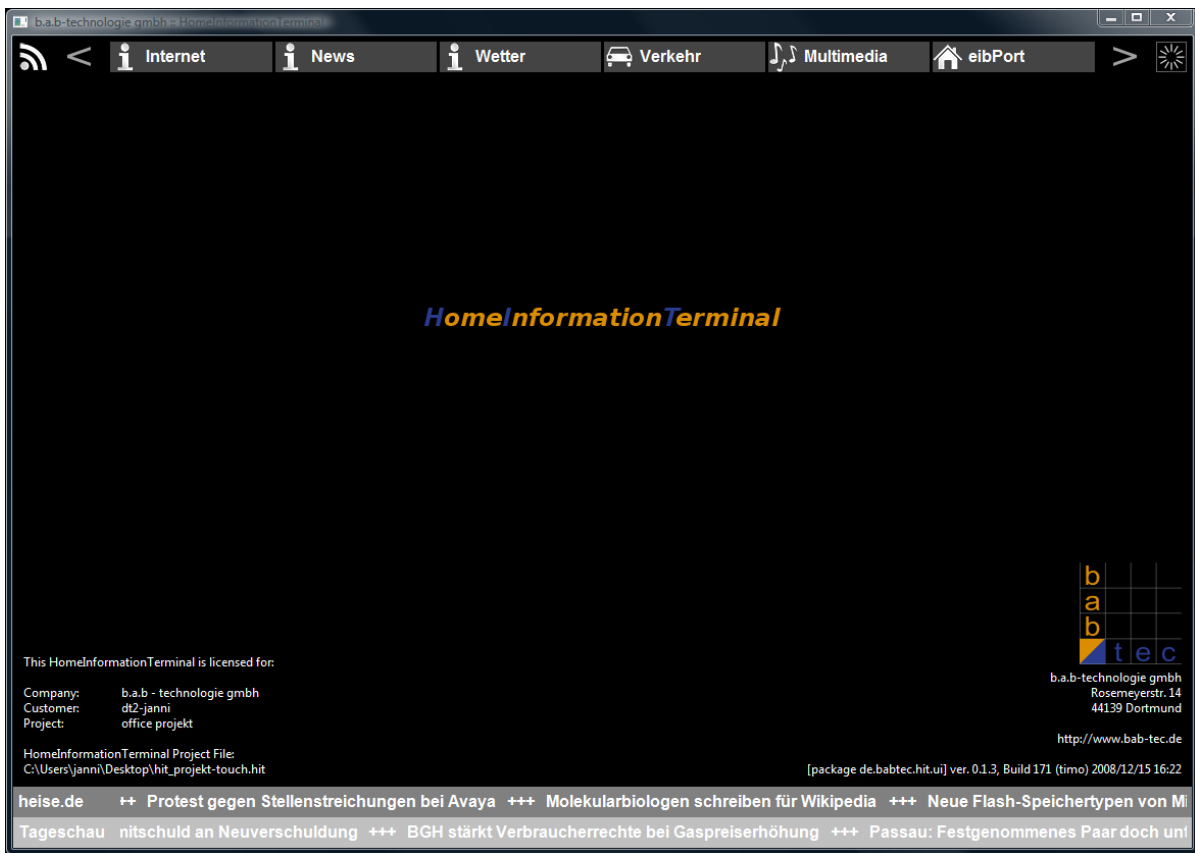
When you have imported the license file, a message will pop up that no configuration file can be found. Choose your .hit file you created before in our example, take the USB-stick and copy the "name.hit" to c:\desktop\name.hit). The HomeInformationTerminal will remember this information; you just have to select this once.

(insted of c:\desktop you can use folders like c:\Documents and Settings\username\).

7. Using the HomeInformationTerminal

Start the HomeInformationTerminal

In the following picture the sample HIT project is shown.



With that icon (top left in the corner of the HIT visualization) several or all RSS feeds can be selected.

The navigation bar can be scrolled to the left  and to the right . If not, all items are shown.

Another menu can be opened with this  icon (top right in the HIT window). Following options are selected:

- **„Toggle Kiosk Mode“** on/off.
Toggle the kiosk mode to show/hide the windows title and the windows task bar. The HIT windows will show as a full screen. So the user can't quit the HIT, if the option "close HIT" is deactivated.
- **„Toggle onscreen keyboard“** show/hide.
For text inputs without a keyboard, an on screen keyboard can be used.



Figure 15 HomeInformationTerminal start page with on screen keyboard

- **„Info“** Shows the information page (HIT start page).
The following information will be shown on the information page:
 - License data
 - File name und path to the HIT project
 - Manufacturer data
 - Version

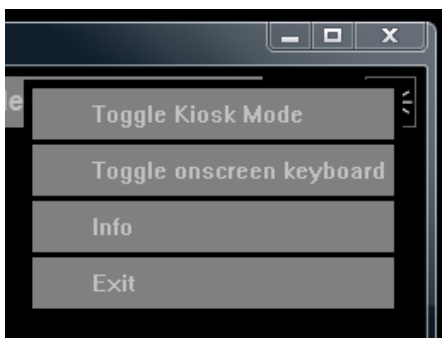
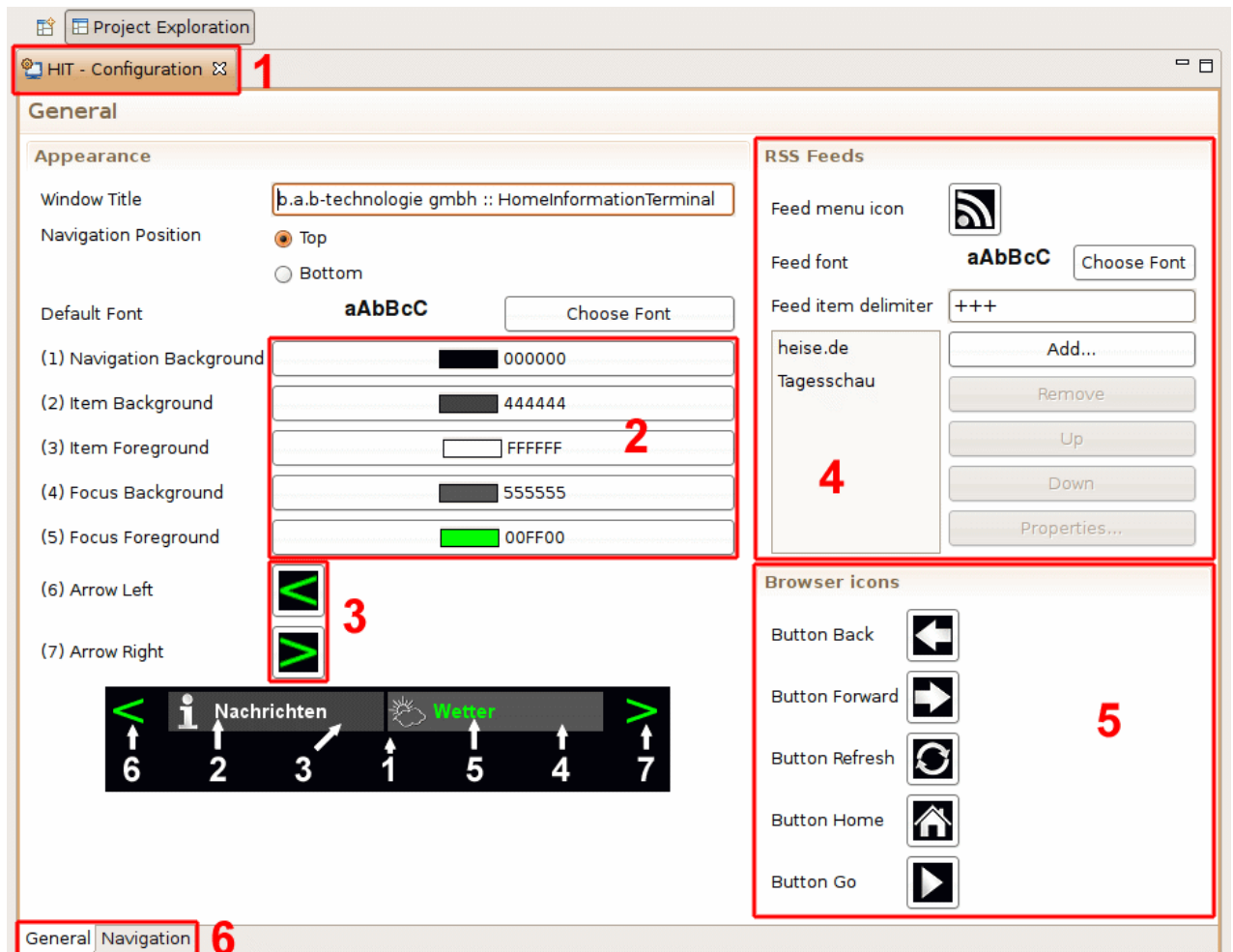


Figure 16 HomeInformationTerminal Menu

„**Exit**“ Close the HIT window.

8. How do I change settings of the HIT Configuration?

Start the Manager Software and choose File → Open → HIT Configuration from the menu. Open c:\desktop\name.hit. The Editor **(1)** will show up with the general parameters for your HIT



Configuration.

You can change the colors of the user interface by clicking on the color indicator **(2)**. If your HIT Configuration will contain lots of tabs, you need some images as scroll arrows **(3)**. Just click on the button and choose a predefined icon or import your own image. Size should be 30x30 pixel. All parameters are indicated in the example image with the numbers from 1 to 7.

If you want to have scrolling news feeds in your HIT, add the URL to the list in section RSS Feeds **(4)**. You can activate or deactivate each stream in a popup menu in the top left of the navigation bar. The icon representing the menu can be configured as well as the delimiters between each icon of the feed.

If you configure a web link in your navigation bar, you can choose if the well known browser commands such as back, forward, refresh, home and a custom address input is visible. The icons for these commands can be configured here, too **(5)**.

To configure the tabs for your HIT go to the Navigation page **(6)**.

9. How do I change the navigation bar?

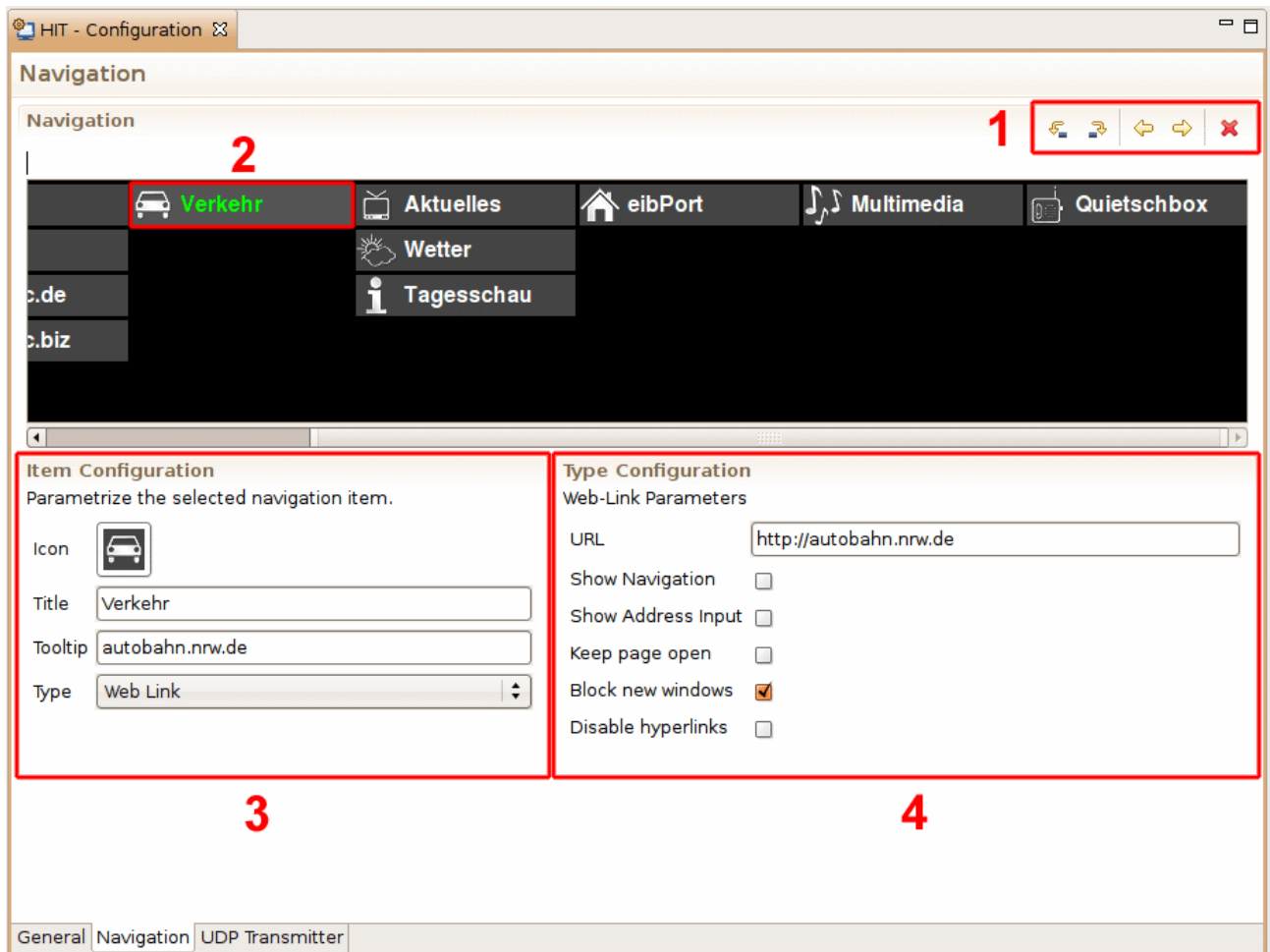


Figure 18 Configure the navigation bar

The navigation page is also a preview how the menu of your HIT Configuration will look. You can see the selected tab on the preview which is indicated by the selected color **(2)**. To insert a new tab left or right to the current selected one, click on the control in the toolbar **(1)**. You can move the selected tab right or left or delete it.

In the Item Configuration section **(3)** you can assign an image, a title and a tooltip to the selected tab. The function of this tab can be chosen from the select box. There are five different options:

- **Web Link** A link to any website which will be opened
- **Menu** A submenu as you can see in the preview above. You can add several tabs which will be arranged vertically
- **UPnP** A test version of a multimedia control point for Universal Plug and Play (UPnP)
- **eibPort** An interface to an eibPort. The visualization will be opened directly in the HIT.
- **Mail** List and read mails from a pop3 or imap server.

The specific parameters for each type will be displayed in the Type Configuration **(4)**.

When you have created the interface as you like, choose File → Save As... from the menu and save the file on your hard disk. The file extension for HIT Configuration files **.hit**.



b.a.b – technologie gmbh

at INHOUSE Dortmund
Rosemeyerstr. 14
44139 Dortmund

info@bab-tec.de

Tel. +49 (0) 231 - 476 425 - 30
Fax. +49 (0) 231 - 476 425 - 59